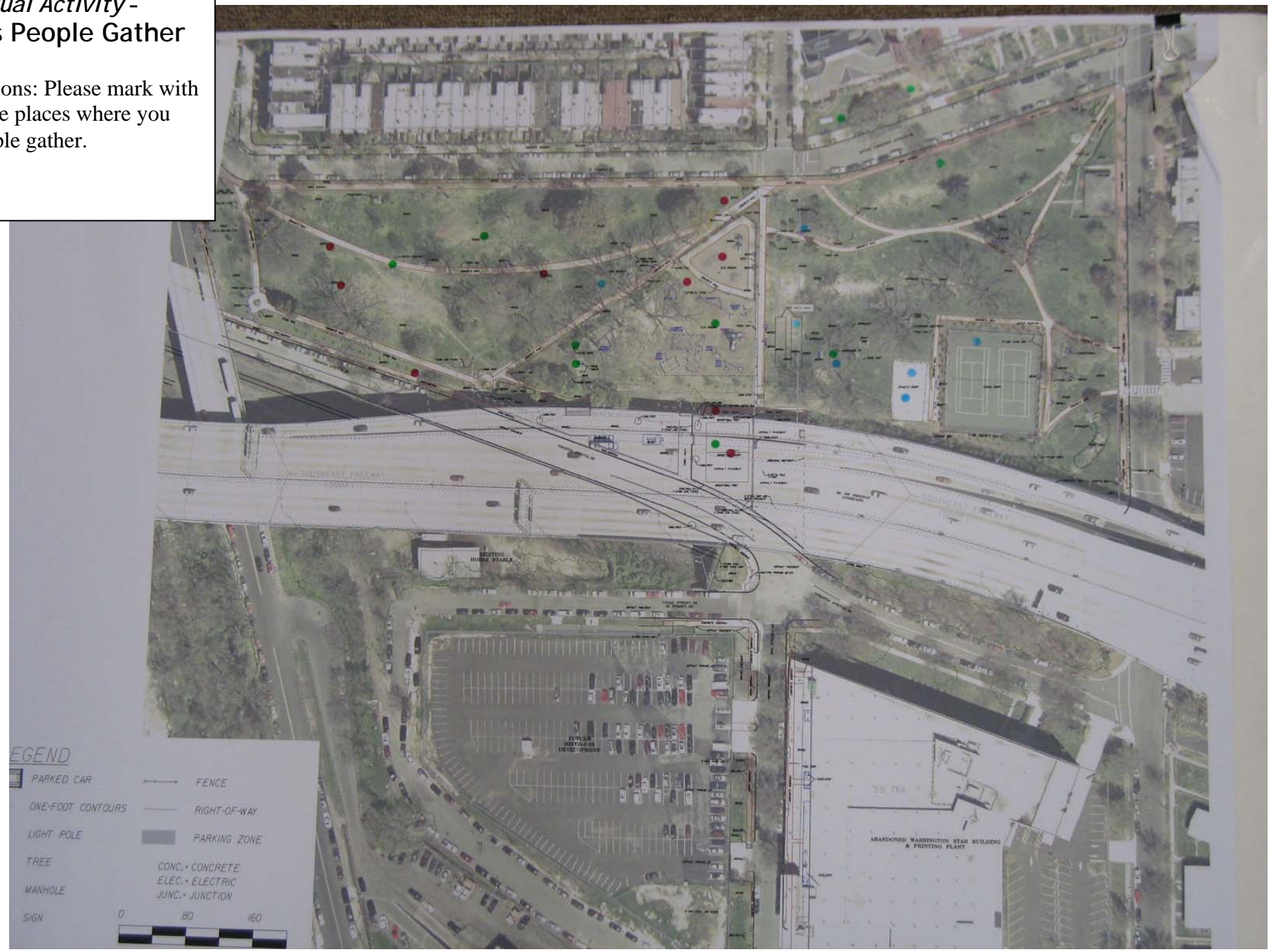


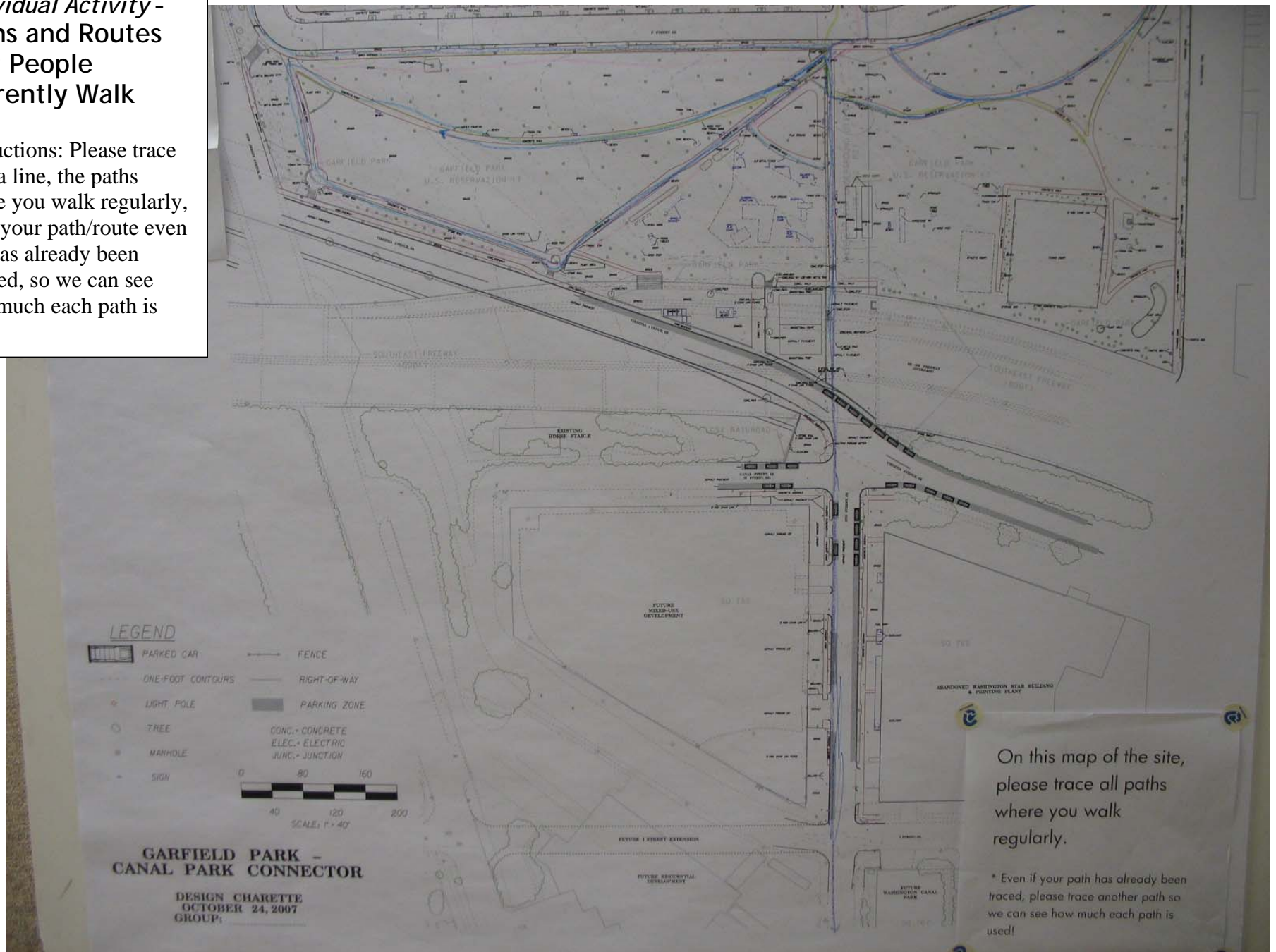
# Individual Activity- Places People Gather

Instructions: Please mark with a dot, the places where you see people gather.



## Individual Activity - Paths and Routes that People Currently Walk

Instructions: Please trace with a line, the paths where you walk regularly, trace your path/route even if it has already been marked, so we can see how much each path is used.



On this map of the site, please trace all paths where you walk regularly.

\* Even if your path has already been traced, please trace another path so we can see how much each path is used!

*Individual Activity -*  
**What Do You Do in Garfield Park**

(Comments on 3 x 5 Cards)

<u>Activity 1</u>	<u>Activity 2</u>	<u>Activity 3</u>
Dog Walk	Boy Scout Meeting	Walk with neighbors/conversation
Capitol Hill Day School (CHDS) back to school picnic	Watching my daughter play	Watching my daughter play
Walked through the park	Walked through the park	Play bocce
Running	Played on jungle gym	Bocce
Dog Walking (4 times/day)	Tennis	Results picnic
P.E.	P.E.	P.E.
Walk the dog	Walk the dog	Walk the dog
Relax in the park	Relax in the park	Relax in the park
Walk the dog	Walk the dog	Walk the dog
Park clean up	Play with the kids	Tennis
Tennis	Trash pick up	Dog walking
Playing with 4 year olds on playground	Picnic with friends	Walking
Bocce	Bocce	Frisbee
Walk through to work everyday	Play on playground with my 3 year old	Dog walking/throwing tennis ball
Results picnic	Cut through to SW	Cut through to SW