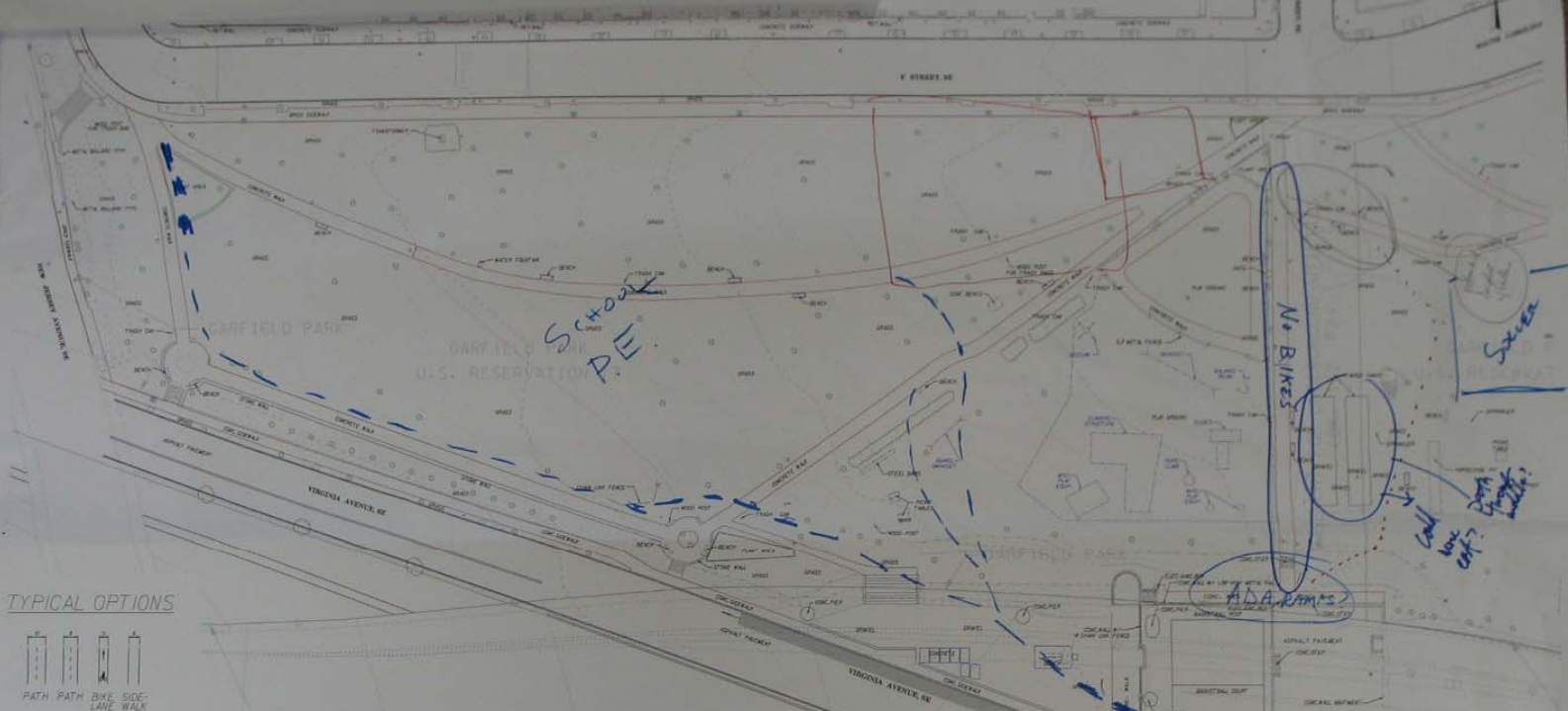


Biking and Walking - Group 1 of 1

<p>Facilitators: Eric Mongelli, Bob Patten, Dan Goodman, Rebecca Lichtenstein</p>	<p><u>Outcomes of Small Group Work</u></p>
<p>Central Challenge: Determine what physical changes should be made to facilitate movement through the park from 1st and 2nd Street, under the freeway and down to Canal Park.</p>	<p>Solution Statement: Keep bicycles off of the central sidewalk (2nd Street alignment) in the park; provide new alternative paths that are as direct as possible, while respecting the existing activities, landscape and mature trees in the park.</p>
<p>Objectives:</p> <ul style="list-style-type: none"> • Encourage use by pedestrians • Create a bike/stroller accessible route • Assure ADA accessibility 	
<p>Considerations:</p> <ul style="list-style-type: none"> • How should the elevation changes be addressed to make the space passable by bike, stroller, wheelchairs, etc.? • In Garfield Park, <ul style="list-style-type: none"> ---how can the project minimize or avoid potential conflicts between children playing and bicycles passing through? ---how should paths be laid out to provide direct routes for bicycles and pedestrians along their travel desire lines? • Should bicyclists and pedestrians be separated or combined? • On 2nd Street, should bicycles be accommodated on the street, off the street, or both? • How should the intersections be improved for bicycle and pedestrian crossing safety? 	<p>Comments & Issues Discussed:</p> <ul style="list-style-type: none"> • Potential conflicts between bicyclists, walkers, runners and skaters. • Potential conflicts between bicyclists and dogs/dog walkers. • Potential conflicts between bicyclists and children playing in the central part of the park. • Widening the trail may harm trees. • Separation of users may be an answer to potential conflicts. • Prohibiting bikes from the central sidewalk in front of the tot lot and playground might be a solution • Do not take space that is being used for a park activity in order to get a path through, unless the activity can be relocated. • A Woonerf on 2nd Street south of the freeway might be good. • A path parallel to existing walk on the southwest edge of the park might be an alternative for moving bikes to and from 1st Street. • How could Virginia Avenue be opened up for bicyclists? • Consider moving one or both bocce courts, • Consider using elevation differential to separate users that travel on paths that are immediately adjacent to each other.
<p>Assumptions:</p> <ul style="list-style-type: none"> • Do not eliminate existing park & recreation activities, however they could be modified or relocated. 	<p>Priorities:</p> <ol style="list-style-type: none"> 1. A path connecting 2nd and H St. with 2nd and F St. that circumvents the play area on the west side. 2. A path from 2nd and H St. to 1st St and F St. that parallels the historic stone walk on the inside, but does not intrude on the open lawn play area. 3. A path that connects 2nd and H St. with 3rd Street at S. Carolina, primarily for walkers, not cyclists; bicyclists can use S. Carolina to 2nd and F St and then the path in Priority 1 above.



TYPICAL OPTIONS



LEGEND

- PARKED CAR
- FENCE
- ONE-FOOT CONTOURS
- RIGHT-OF-WAY
- LIGHT POLE
- PARKING ZONE
- TREE
- CONC. CONCRETE
- ELEC. ELECTRIC
- MANHOLE
- JUNC. JUNCTION
- SIGN



GARFIELD PARK - CANAL PARK CONNECTOR

DESIGN CHARETTE
OCTOBER 24, 2007
GROUP: *Stylin*



Consider Woonerf for
2nd Street SE